



# Beaufort County Public Works

## Stormwater Infrastructure

### Project Summary

**Project Summary:** Sheldon Vacuum Truck- Wimbee Landing Road, Lobeco Drop Off Center, Paige Point Bluff, Prescott Road, Big Estate Circle, Haynes Road , Old Dawson Acres, Middlefield Circle, George Williams Road, Judge Island and Bessies Lane.

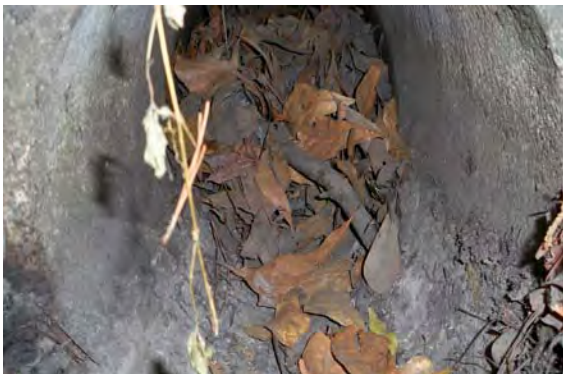
#### Narrative Description of Project:

Cleaned out (3) catch basins. Jetted (21) driveway pipes, (13) crossline pipes, (6) access pipes, 16 L.F. outfall pipe and 42 L.F. of roadside pipe.

**Completion:** Jun-11

2011-308B / Sheldon Vacuum Truck	Labor Hours	Labor Cost	Equipment Cost	Material Cost	Contractor Cost	Indirect Labor	Total Cost
APJT / Access pipe - jetted	10.0	\$218.80	\$110.80	\$49.10	\$0.00	\$0.00	\$378.70
AUDIT / Audit Project	1.5	\$30.72	\$0.00	\$0.00	\$0.00	\$0.00	\$30.72
CLPJT / Crossline Pipe - Jetted	52.0	\$1,119.16	\$576.16	\$408.38	\$0.00	\$0.00	\$2,103.70
COMP / Compile Project	1.5	\$30.72	\$0.00	\$0.00	\$0.00	\$0.00	\$30.72
DPJT / Driveway Pipe - Jetted	31.0	\$676.93	\$398.88	\$306.93	\$0.00	\$0.00	\$1,382.74
OFPJ / Outfall Pipe - Jetted	8.0	\$171.32	\$88.64	\$35.58	\$0.00	\$0.00	\$295.54
WDR / Wash down road	4.0	\$85.66	\$44.32	\$31.14	\$0.00	\$0.00	\$161.12
Indirect Labor, Services and Supplies	0.0	\$0.00	\$0.00	\$0.00	\$0.00	\$1,571.26	\$1,571.26
<b>2011-308B / Sheldon Vacuum Truck Sub Total</b>	<b>108.0</b>	<b>\$2,333.31</b>	<b>\$1,218.80</b>	<b>\$831.13</b>	<b>\$0.00</b>	<b>\$1,571.26</b>	<b>\$5,954.50</b>
<b>Grand Total</b>	<b>108.0</b>	<b>\$2,333.31</b>	<b>\$1,218.80</b>	<b>\$831.13</b>	<b>\$0.00</b>	<b>\$1,571.26</b>	<b>\$5,954.50</b>

Before



During



After

